

HOUSING SPECIFICATION
Housing Model - B-160H Heat Exchanger Model - HE-300

Maximum Voltage

| | | | |
|-----------------------------------------------------|----------------------------|------------------------------------|------------------------|
| Anode to Cathode | 150 pKV | Anode Rotation | |
| Anode to Ground | 75 pKV | Starter | AID D060 |
| Cathode to Ground | 75 pKV | Boost Time | 2 sconds |
| Maximum Heat Storage | 1500 KHU | Leakage Technique Factors | 150 kV, 4 mA |
| Maximum Heat Exchanger | | High Voltage Receptacles | Federal Standard No.72 |
| Dissipation | 4,050 HU/sec (3000 W) | Storage Temperature/Humidity | |
| Maximum System Dissipation | | Temperature | 5 to 75°C |
| (Includes stator heat) | 2,500 HU/sec (1852 W) | Humidity | +10 to 90% |
| Focal Point Position | | Weight | |
| (Central Ray) | Within 1mm | Housing | 23 kg (50.5 lbs) |
| (X, Y direction) from the center of radiation port. | | Heat Exchanger | 12.6 kg (28 lbs) |
| Inherent Filtration | 1.2 mm Aluminum equivalent | IEC Equipment Classification | Class 1 |

STATOR SPECIFICATIONS
50/60 HERTZ

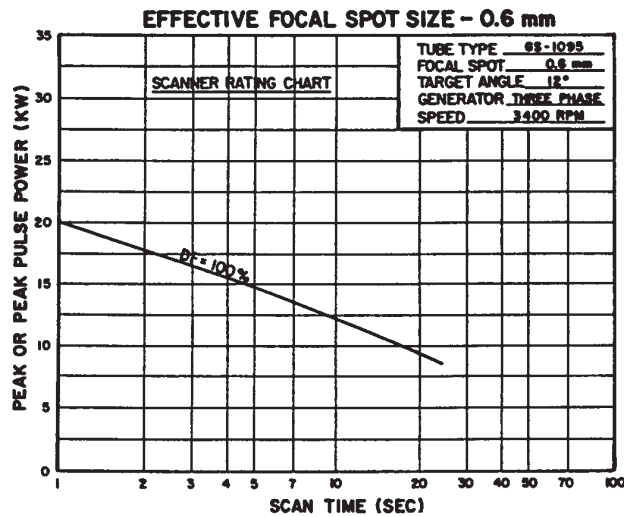
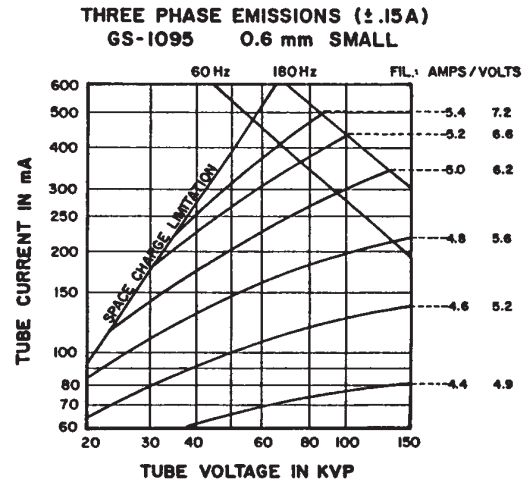
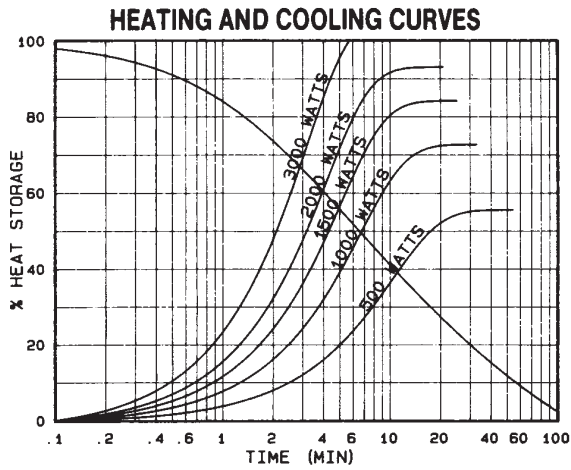
Nominal Values for Typical Starters

| 3200RPM | VOLTS | AMPS | TIME |
|----------------------|--------------|-------------|-------------|
| Start | | | |
| Phase | 208 VAC | 8.6 | 2.0 SEC |
| Phase Shift | 275 VAC | 3.5 | |
| Run | | | |
| Phase | 55 VAC | .94 | Continuous |
| Phase Shift | 63 VAC | .57 | |
| Stator Resistance | | | |
| White to Black | 16 OHMS | | |
| White to Green | 50 OHMS | | |

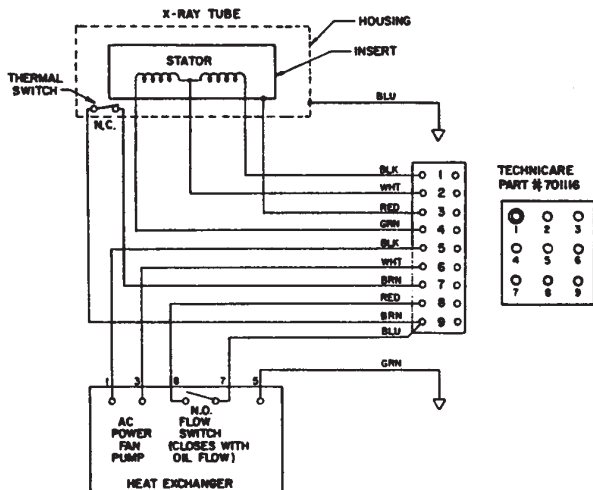
GS-1095 SEASONING PROCEDURE
1000 KHU ANODE

1. Use Manual Mode of Scanner power supply.
Select 80 KV, 100 mA.
 2. Turn "On" power supply for 85 seconds. (918 KHU)
 3. Wait 60 seconds Turn on power supply for 10 seconds.
 4. Repeat step 3 five times (one 10 second exposure every 60 seconds).
 5. Allow tube to cool for 30 minutes.
 6. At 100 mA 4 seconds make a series of scans or exposures starting at 80 KV and increase KV in 10 KV steps until maximum desired KV is reached.
- Seasoning Procedure based on anode at room temperature for start of procedure. If procedure is aborted, wait one hour before restarting.

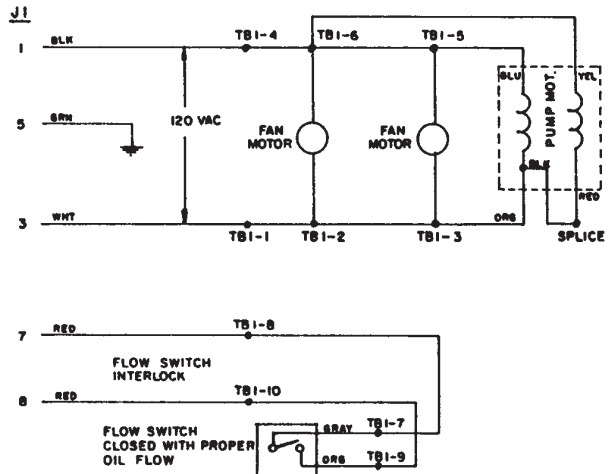
GS1095 WIRING DIAGRAM



GS-1095 WIRING DIAGRAM



HE-300
120 VAC 50/60 Hz



HE-300/HE-301 Heat Exchanger

